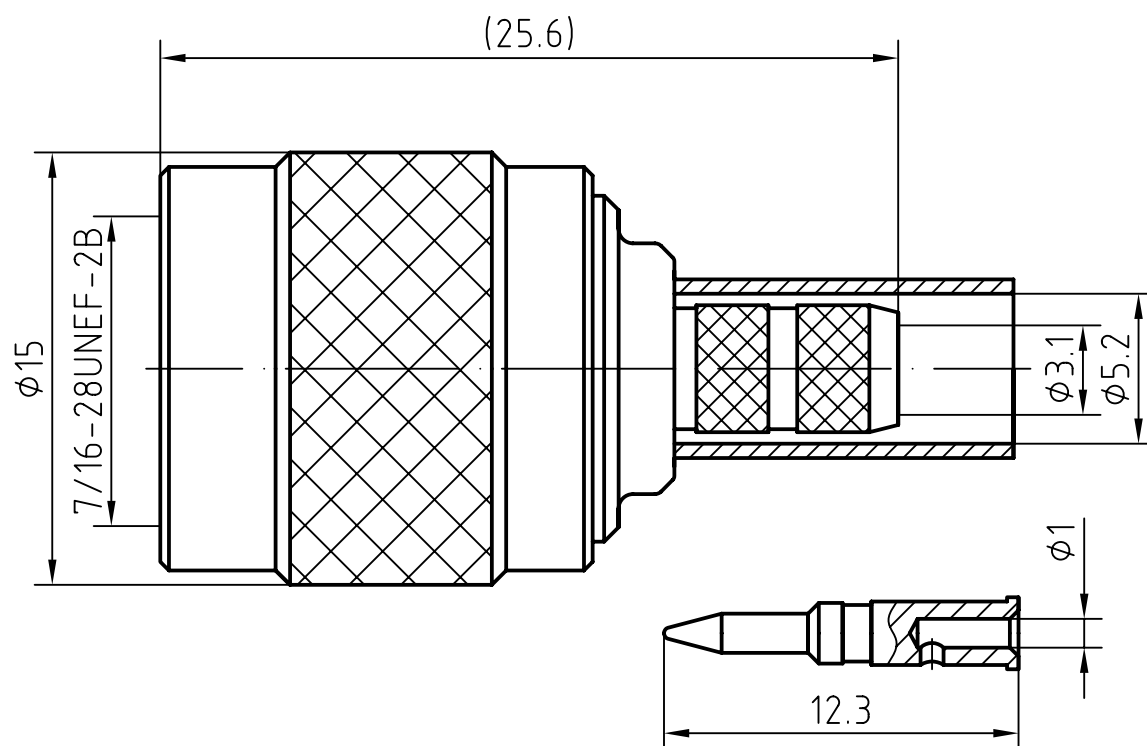
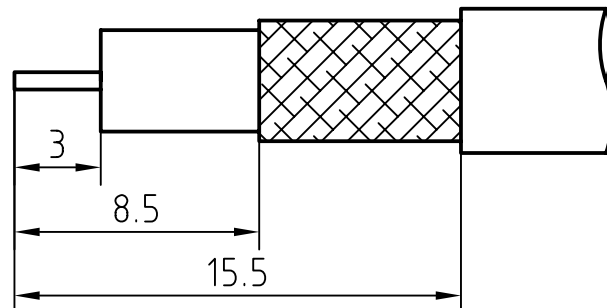


DRAWING



CABLE(RG58/U, RG303/U)



6	1	Ferrule	Copper/Nickel plated	Nickel 5um over Copper 2um
5	1	O ring	Silicone rubber	
4	1	Coupling nut	Brass/Nickel plated	Nickel 5um over Copper 2um
3	1	Body	Brass/Nickel plated	Nickel 5um over Copper 2um
2	1	Insulator	PTFE	
1	1	Centor contact	Brass/Gold plated	Gold 0.2um over Nickel 2um
Itemref	Quantity	Title/Name, designation, material, dimension etc		Article No./Reference

Designed by

Checked by

Approved by - date

File name

Date

Scale

T-111FQA

Edition

Sheet

# CHARACTERISTICS

DESCRIPTION: TNC Type male connector

Electrical data:

Impedance: 50 ohm  
Frequency range: DC to 10 GHz  
VSWR:  $\leq 1.08 + 0.025 \times f[\text{GHz}]$   
Insertion loss:  $\leq 0.08 \times \sqrt{f[\text{GHz}]} \text{ dB}$   
Insulation resistance:  $\geq 5000 \text{ M}\Omega$   
Test voltage: 1500 V rms  
Working voltage: 500 V rms  
Contact resistance:  
1). Centre contact: 1.5 mΩ  
2). Outer conductor: 1.0 mΩ  
Power handling (at 20 °C, sea level, VSWR 1.0)  $\leq 80 \text{ W @ 2 GHz}$

Environmental data:

Temperature rating: -65 ° C to +165 ° C  
2002/95/EC (RoHS): Compliant

Mechanical data:

Mating cycles:  $\geq 500$   
Coupling test torque:  $\leq 1.7 \text{ Nm}$   
Recommended torque: 0.46 Nm to 0.69 Nm

Suitable cables:

RG58/U,RG303/U