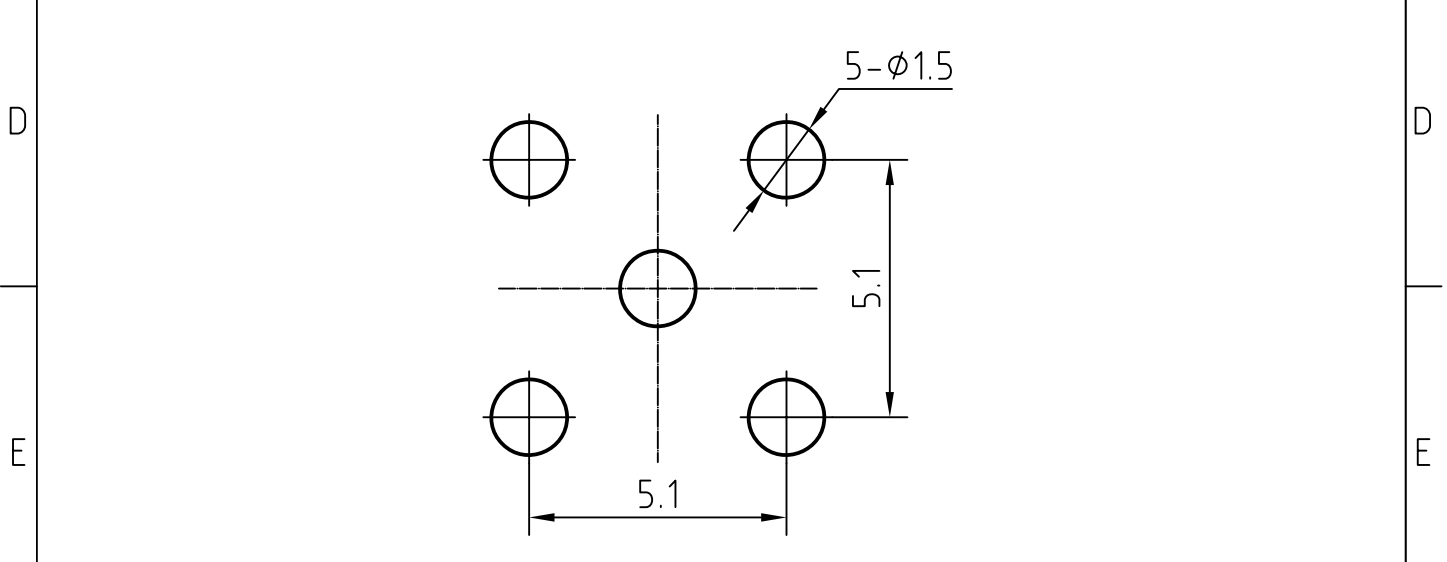


PCB RECOMMENDED LAYOUT



	4	1	Spring contact	Beryllium copper/Gold plated				
	3	1	Body	Brass/Gold plated				
	2	1	Insulator	PTFE				
	1	1	Center contact	Beryllium copper/Gold plated				
F	Designed by		Checked by	Approved by - date	File name	Date	Scale	F
					S3-P215QA			
						Edition	Sheet	
	1							4

CHARACTERISTICS

DESCRIPTION:

SMP Type female connector for PCB

Electrical data:

<i>Impedance:</i>	<i>50 ohm</i>
<i>Frequency range:</i>	<i>DC to 26.5 GHz</i>
<i>VSWR:</i>	<i>$\leq 1.05 + 0.015Xf[\text{GHz}]$</i>
<i>Insertion loss:</i>	<i>$\leq 0.1X\sqrt{f[\text{GHz}]} \text{ dB}$</i>
<i>Insulation resistance:</i>	<i>$\geq 5 \text{ G}\Omega$</i>
<i>Test voltage:</i>	<i>500 V rms</i>
<i>Working voltage:</i>	<i>335 V rms</i>
<i>Contact resistance:</i>	
1). Centre contact:	<i>6.0 mΩ</i>
2). Outer conductor:	<i>2.0 mΩ</i>
<i>Contact Current:</i>	<i>1.2A DC max.</i>

Environmental data:

<i>Temperature rating:</i>	<i>-65 ° C to +165 ° C</i>
<i>2002/95/EC (RoHS):</i>	<i>Compliant</i>

Mechanical data:

<i>Mating cycles:</i>	
<i>if mating part is smooth bore:</i>	<i>≥ 1000</i>
<i>if mating part is limited detent:</i>	<i>≥ 500</i>
<i>if mating part is full detent:</i>	<i>≥ 100</i>
<i>Center contact captivation:</i>	<i>$\geq 7 \text{ N(axial)}$</i>
<i>Engagement force:</i>	<i>Disengagement force:</i>
<i>smooth bore:</i> <9N	<i>smooth bore:</i> <2.2N
<i>limited detent:</i> <45N	<i>limited detent:</i> <9N
<i>full detent:</i> <68N	<i>full detent:</i> <22N

Suitable cables:

N/A