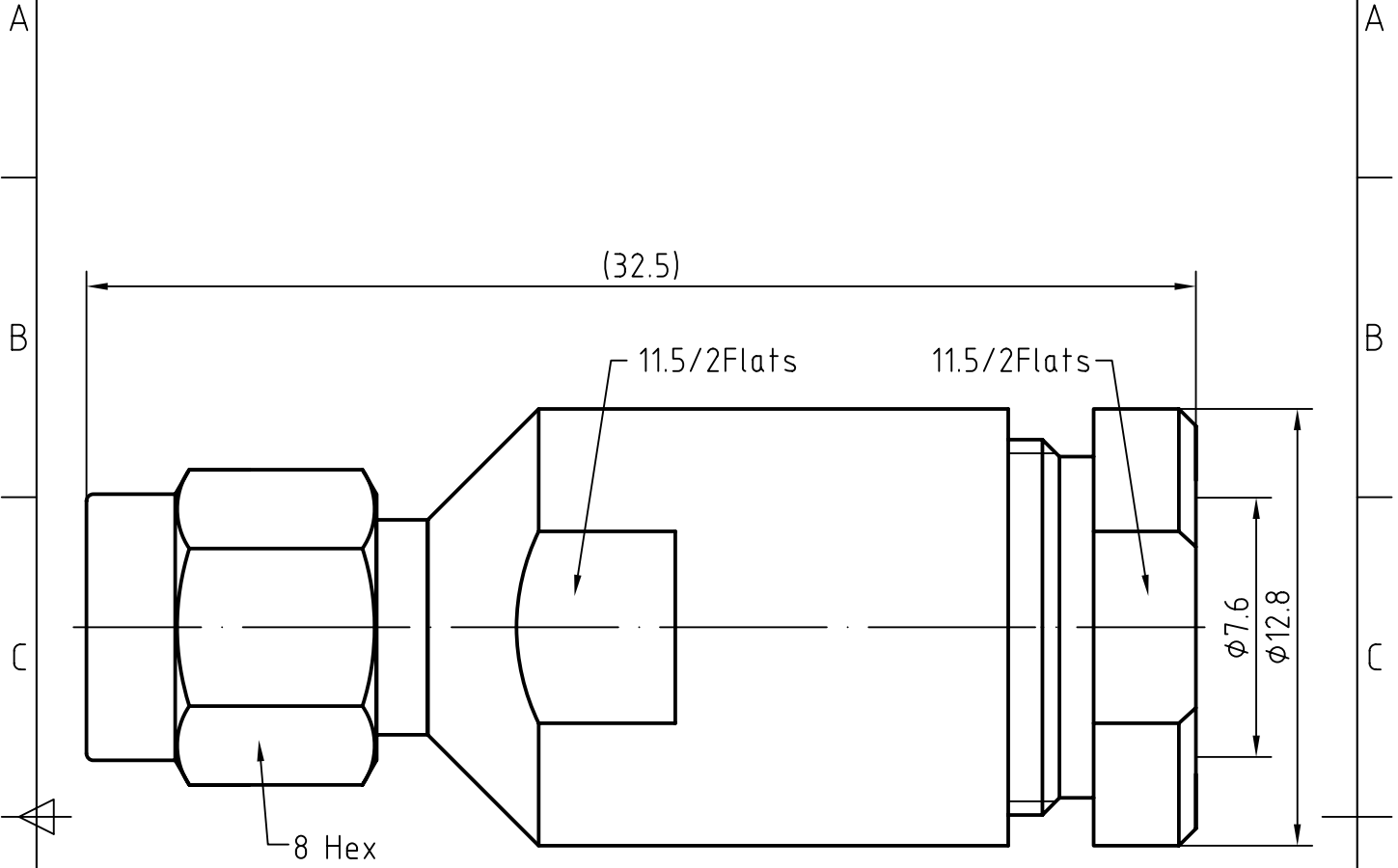


DRAWING



APPLY CABLE: 5D-FB

5	1	O ring	Silicon rubber	
4	1	Coupling nut	Brass/Nickel plated	Gold 0.2um over Nickel 2um
3	1	Body	Brass/Nickel plated	Gold 0.2um over Nickel 2um
2	1	Insulator	PTFE	
1	1	Center contact	Brass/Gold plated	Gold 0.5um over Nickel 2um
Itemref	Quantity	Title/Name, designation, material, dimension etc		Article No./Reference

Designed by		Checked by	Approved by - date	File name	Date	Scale
				S-112/LMR300		
					Edition	Sheet

CHARACTERISTICS

DESCRIPTION:

SMA Type male connector

Electrical data:

Impedance:	50 ohm
Frequency range:	DC to 12.4 GHz
VSWR:	$\leq 1.08 + 0.03 \times f \text{ [GHz]}$, DC to 5 GHz
Insertion loss:	$\leq 0.10 \times \sqrt{f \text{ [GHz]}}$ dB, DC-5GHz
Insulation resistance:	$\geq 5000 M\Omega$
Test voltage:	1000 V rms
Working voltage:	480 V rms
Contact resistance:	
1). Centre contact:	3.0 m Ω
2). Outer conductor:	2.5 m Ω
Power handling (at 20 ° C, sea level, VSWR 1.0):	$\leq 200 \text{ W @ } 2 \text{ GHz}$
RF-leakage:	$\geq 100 \text{ dB up to } 1 \text{ GHz}$

Environmental data:

Temperature rating:	-65 ° C to +165 ° C
2002/95/EC (RoHS):	Compliant

Mechanical data:

Mating cycles:	≥ 500
Coupling nut retention:	$\geq 270 \text{ N}$
Center contact captivation:	$\geq 27 \text{ N(axial)}$
Coupling test torque:	$\leq 1.1 \text{ Nm}$
Recommended torque:	0.46 Nm to 0.69 Nm

Suitable cables:

5D-FB