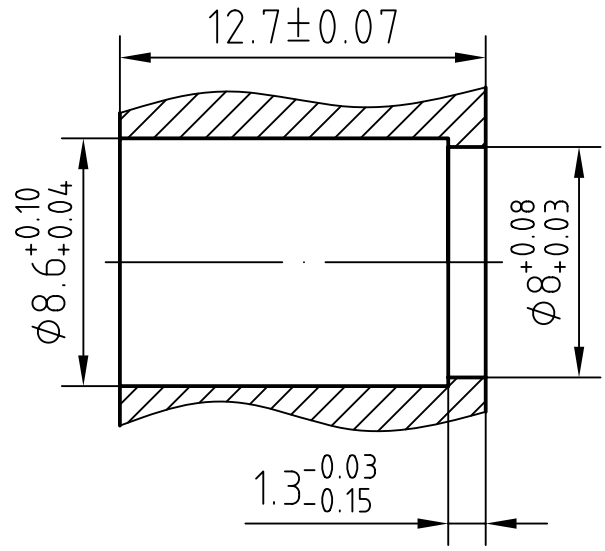
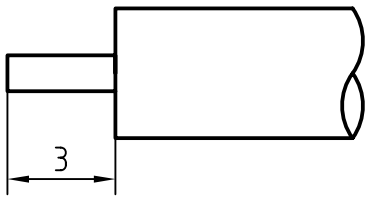


DRAWING

CABLE(670-086, .086, SM086)

MOUNTING HOLE



|   |   |                |                              |                            |
|---|---|----------------|------------------------------|----------------------------|
| 4 | 1 | Body           | Brass/Nickel plated          | Nickel 7um over Copper 2um |
| 3 | 1 | Insulator      | PTFE                         |                            |
| 2 | 1 | Outer contact  | Brass/Gold plated            | Gold 0.2um over Nickel 2um |
| 1 | 1 | Center contact | Beryllium copper/Gold plated | Gold 0.5um over Nickel 2um |

|             |            |                    |             |         |       |
|-------------|------------|--------------------|-------------|---------|-------|
| Designed by | Checked by | Approved by - date | File name   | Date    | Scale |
|             |            |                    | BMA-F115QQA |         |       |
|             |            |                    |             | Edition | Sheet |

## CHARACTERISTICS

### DESCRIPTION:

BMA Type female BH connector

#### Electrical data:

|                        |                               |
|------------------------|-------------------------------|
| Impedance:             | 50 ohm                        |
| Frequency range:       | DC to 18 GHz                  |
| VSWR:                  | $\leq 1.05 + 0.02Xf$ [GHz]    |
| Insertion loss:        | $\leq 0.06X\sqrt{f}$ [GHz] dB |
| Insulation resistance: | $\geq 5000M\Omega$            |
| Test voltage:          | 750 V rms                     |
| Working voltage:       | 480 V rms                     |
| Contact resistance:    |                               |
| 1). Centre contact:    | 3.0 m $\Omega$                |
| 2). Outer conductor:   | 2.0 m $\Omega$                |

#### Environmental data:

|                     |                     |
|---------------------|---------------------|
| Temperature rating: | -65 ° C to +125 ° C |
| 2002/95/EC (RoHS):  | Compliant           |

#### Mechanical data:

|                |            |
|----------------|------------|
| Mating cycles: | $\geq 500$ |
|----------------|------------|

#### Suitable cables:

670-086, .086, SM086