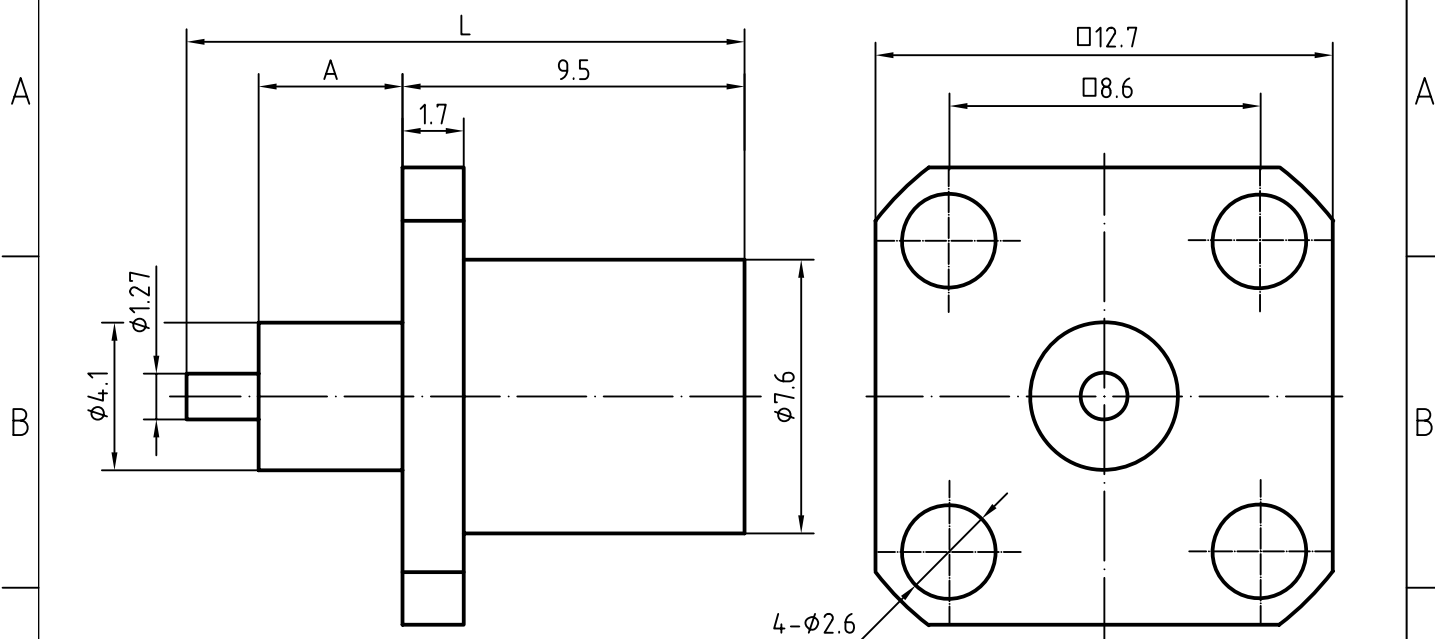
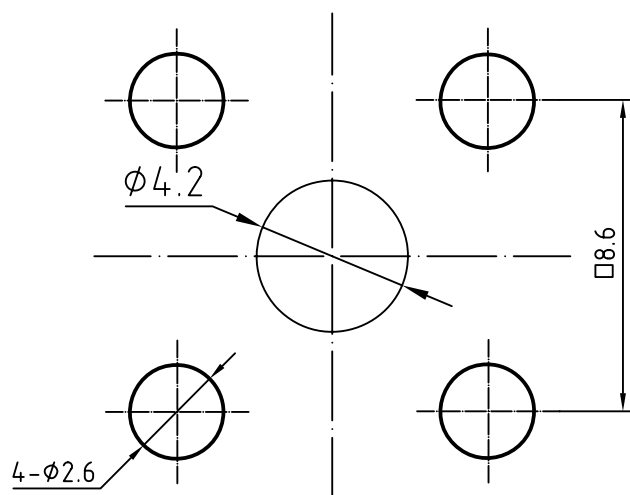


DRAWING



ITEM	PART No.	PRODUCT TYPE	A	L
1	192A-0001	BMA-KFD	8.4	21.9
2	192A-0002	BMA-KFD1	4.0	15.5
3	192A-0003	BMA-KFD2	3.0	14.5
4	192A-0004	BMA-KFD3	15.0	27.4

MOUNTING HOLE



4	1	Body	Brass/Gold plated	Gold 0.2um over Copper 2.0um
3	1	Insulator	PTFE	
2	1	Outer contact	Brass/Gold plated	Gold 0.2um over Copper 2.0um
1	1	Center contact	Beryllium copper/Gold plated	Gold 0.5um over Copper 2.0um

Designed by

Checked by

Approved by - date

File name

Date

Scale

BMA-245QA

Edition

Sheet

CHARACTERISTICS

DESCRIPTION:

BMA Type female FL connector

Electrical data:

Impedance:	50 ohm
Frequency range:	DC to 6GHz
VSWR:	$\leq 1.05 + 0.03 \times f[\text{GHz}]$
Insertion loss:	$\leq 0.05 \times \sqrt{f[\text{GHz}]} \text{ dB, BMA-KFD, KFD1, KFD2}$ $\leq 0.08 \times \sqrt{f[\text{GHz}]} \text{ dB, BMA-KFD3}$
Insulation resistance:	$\geq 5000 \text{ M}\Omega$
Test voltage:	480V rms
Contact resistance:	
1). Centre contact:	3.0 m Ω
2). Outer conductor:	2.0 m Ω

Environmental data:

Temperature rating:	-65 ° C to +125 ° C
2002/95/EC (RoHS):	Compliant

Mechanical data:

Mating cycles:	≥ 500
----------------	------------

Suitable cables:

N/A