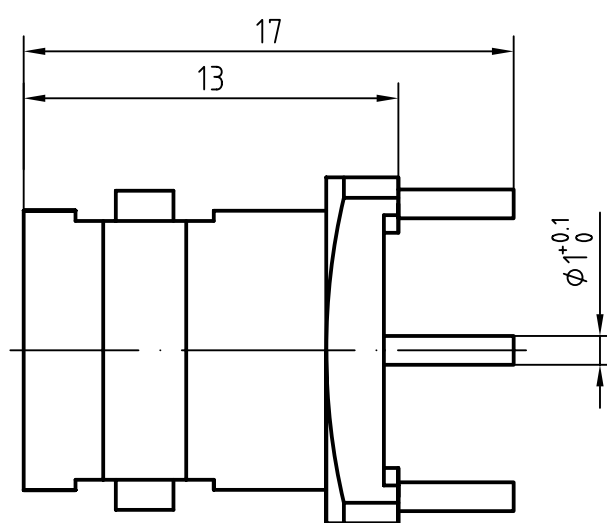
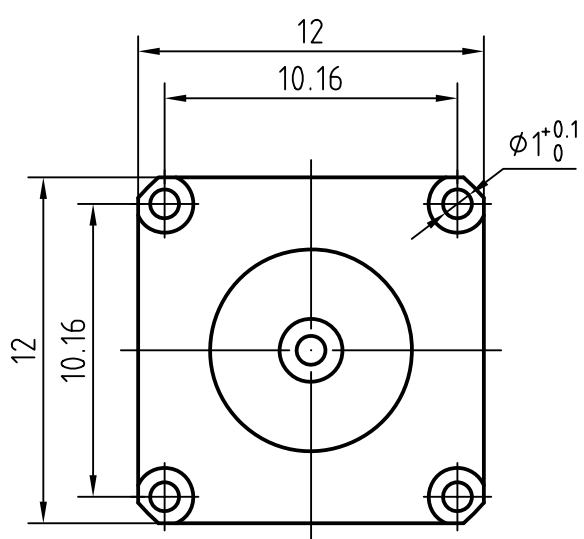


DRAWING



3	1	Body	Brass/Nickel plated	Nickel 7um over Copper 2um		
2	1	Insulator	PTFE			
1	1	Center contact	Phosphor bronze/Gold plated	Gold 0.5um over Nickel 2um		
Designed by		Checked by	Approved by - date	File name	Date	Scale
			B-P215QA			
					Edition	Sheet

CHARACTERISTICS

DESCRIPTION: BNC Type female connector for PCB solder legs

Electrical data:

Impedance: 50 ohm
Frequency range: DC to 4 GHz
VSWR: $\leq 1.06 \times 0.02f[\text{GHz}]$
Insertion loss: $\leq 0.05 \times \sqrt{f[\text{GHz}]} \text{ dB}$
Insulation resistance: $\geq 5000\text{M}\Omega$
Test voltage: 1500 V rms
Working voltage: 500 V rms
Contact resistance:
 1). Centre contact: 1.5 mΩ
 2). Outer conductor: 1.0 mΩ
RF Leakage : $\leq -(57-f[\text{GHz}])\text{dB}$

Environmental data:

Temperature rating: -65 ° C to +165 ° C
2002/95/EC (RoHS): Compliant

Mechanical data:

Mating cycles: ≥ 500
Center contact retention: $\geq 18 \text{ N(axial)}$

Suitable cables:

N/A