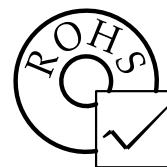
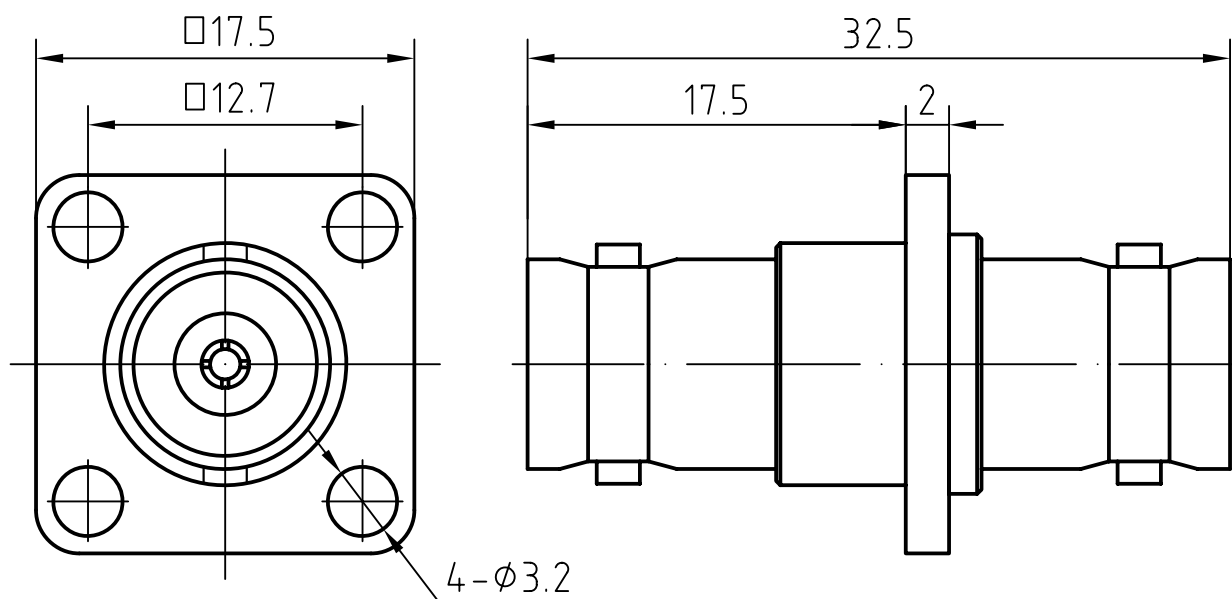


DRAWING



3	1	Body	Brass/Nickel plated	Nickel 7um over copper 2um	
2	1	Insulator	PTFE		
1	1	Centre contact	Phosphor bronze/Gold plated	Gold 0.3um over Nickel 2um	
Itemref	Quantity	Title/Name, designation, material, dimension etc			Article No./Reference
Designed by		Checked by	Approved by - date	File name	Date
		B-342QA			
					Edition
					Sheet

CHARACTERISTICS

DESCRIPTION:

ADAPTOR BNC JACK TO JACK FL

Electrical data:

Impedance:	50 ohm
Frequency range:	DC to 4 GHz
VSWR:	$\leq 1.15:1$, DC-3GHz $\leq 1.25:1$, 3-4GHz
Insertion loss:	$\leq 0.1 \times \sqrt{f[\text{GHz}]} \text{ dB}$
Insulation resistance:	$\geq 5000 \text{ M}\Omega$
Test voltage:	1500 V rms
Working voltage:	400 V rms
Contact resistance:	
1). Centre contact:	1.5 m Ω
2). Outer conductor:	1.0 m Ω
Power handling (at 20 ° C, sea level, VSWR 1.0):	$\leq 80 \text{ W @ } 2 \text{ GHz}$

Environmental data:

Temperature rating:	-65 ° C to +165 ° C
2002/95/EC (RoHS):	Compliant

Mechanical data:

Mating cycles:	≥ 500
Center contact captivation:	$\geq 15 \text{ N(axial)}$

Suitable cables:

N/A