

1

2

3

4

5

6

RevNo

Revision note

Date

Signature

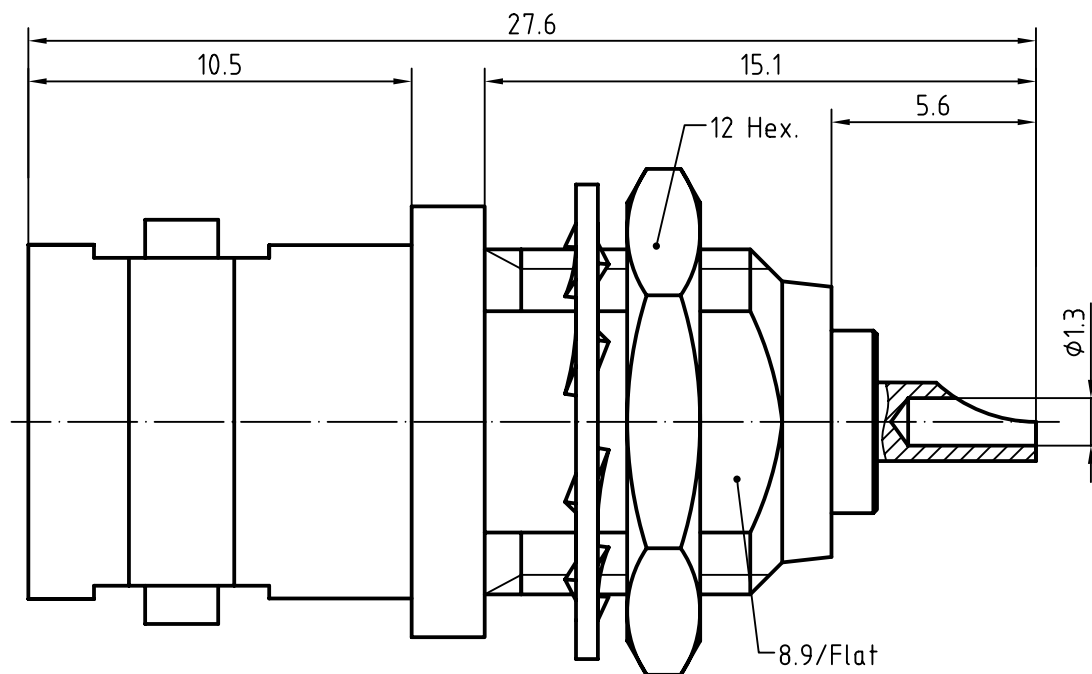
Checked

A

B

C

D



Mounting hole

A

B

C

D

5	1	Lock nut	Brass/Nickel plated	Nickel 7.0 over Copper 2.0	
4	1	Lock washer	Beryllium bronze/Neckel plated	Nickel 7.0 over Copper 2.0	
3	1	Body	Brass/Nickel plated	Nickel 7.0 over Copper 2.0	
2	1	Insulator	PTFE		
1	1	Centor pin	Phosphor bronze/Gold plated	Gold 0.2 over Nickel 2.0	
Itemref	Quantity	Title/Name, designation, material, dimension etc			Article No./Reference
Designed by		Checked by	Approved by - date	File name	Date
			Title: B-235QA		
Customer drawing No.:				Edition	Sheet

# CHARACTERISTICS

DESCRIPTION: BNC Type female BH connector

Electrical data:

Impedance: 50 ohm  
Frequency range: DC to 4 GHz  
VSWR:  $\leq 1.06 \times 0.03f[\text{GHz}]$   
Insertion loss:  $\leq 0.025 \times \sqrt{f[\text{GHz}]} \text{ dB}$   
Insulation resistance:  $\geq 5000\text{M}\Omega$   
Test voltage: 1500 V rms  
Working voltage: 500 V rms  
Contact resistance:  
    1). Centre contact: 1.5 mΩ  
    2). Outer conductor: 1.0 mΩ  
RF Leakage :  $\leq -(57-f[\text{GHz}])\text{dB}$

Environmental data:

Temperature rating: -65 ° C to +165 ° C  
2002/95/EC (RoHS): Compliant

Mechanical data:

Mating cycles:  $\geq 500$   
Center contact retention:  $\geq 18 \text{ N(axial)}$   
Torque:  $\geq 2.8\text{N.cm}$

Suitable cables:

N/A